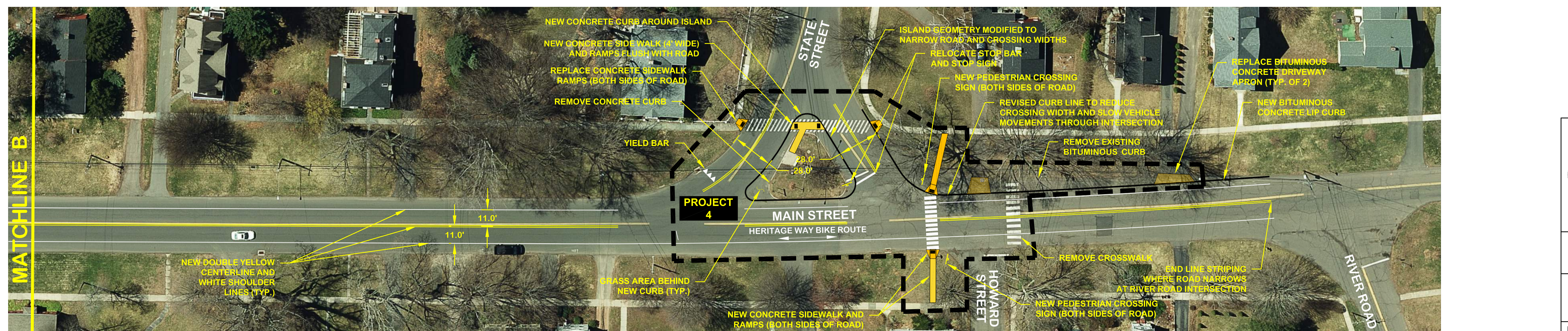
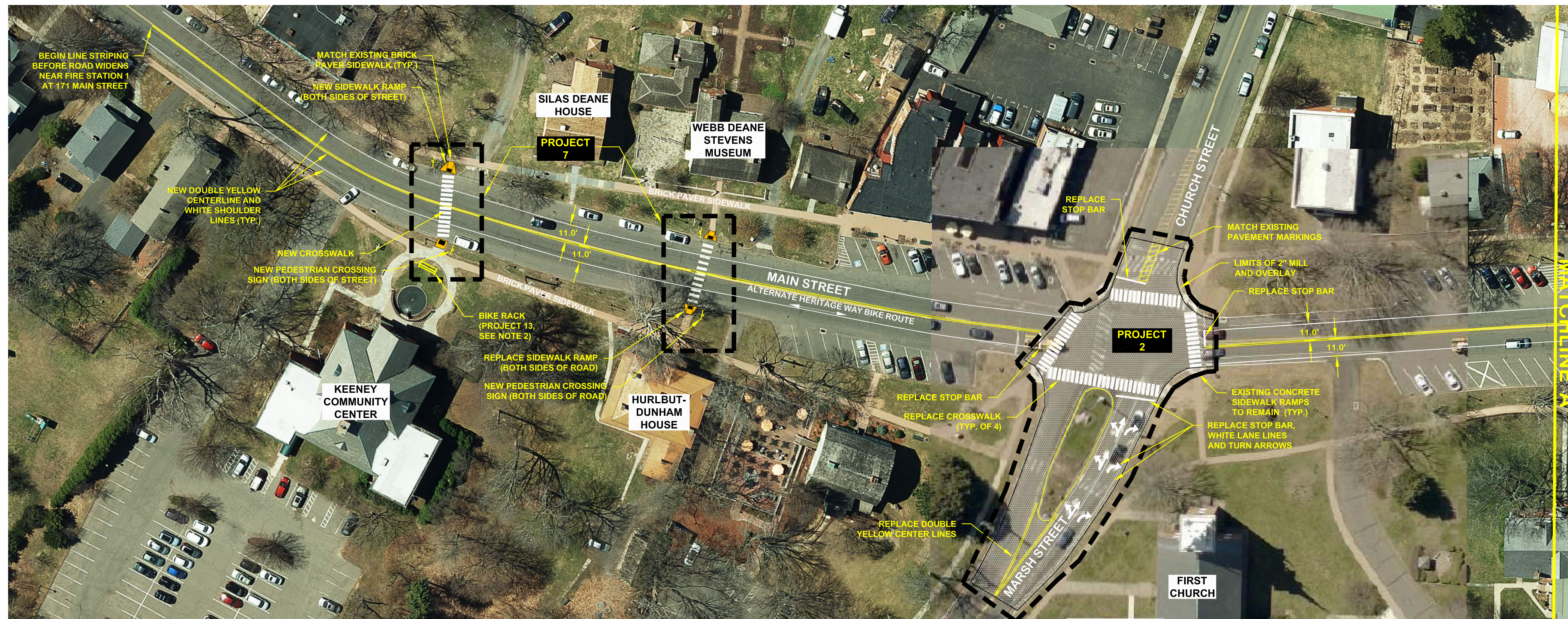


- NOTES:**
1. UNLESS LOCATED WITHIN THE LIMITS OF PROJECTS 2, 3, 4 AND 7 SHOWN, REMAINING IMPROVEMENTS ARE INCLUDED IN PROJECT 1 - MAIN STREET LINE STRIPING. INSTALLATION OF PAINTED SHARROW MARKINGS ALONG THIS SECTION OF MAIN STREET ARE NOT SHOWN; HOWEVER, THEY ARE INCLUDED IN THE COST ESTIMATE FOR PROJECT 1.
 2. PROJECT 11 INCLUDES INSTALLATION OF BIKE RACKS AT THE KEENEY COMMUNITY CENTER AND OTHER AREAS ALONG MAIN STREET (NOT SHOWN ON PLAN).



**TOWN OF WETHERSFIELD
DEPARTMENT OF PUBLIC WORKS
ENGINEERING DIVISION**
505 SILAS DEANE HIGHWAY
WETHERSFIELD, CT 06109

**COMMUNITY CONNECTIVITY
GRANT PROGRAM**

- PROJECT 1 - MAIN ST LINE STRIPING
- PROJECT 2 - IMPROVEMENTS AT MAIN ST, CHURCH ST AND MARSH ST INTERSECTION
- PROJECT 3 - IMPROVEMENTS AT MAIN ST AND HARTFORD AVE INTERSECTION
- PROJECT 4 - IMPROVEMENTS AT MAIN ST AND STATE ST INTERSECTION
- PROJECT 7 - PEDESTRIAN CROSSING IMPROVEMENTS NEAR 200-212 MAIN ST
- PROJECT 11 - BICYCLE PARKING

DRAWN BY: LB	DATE: JULY 2017	Sheet No.
CHECKED BY: DG	SCALE: 1" = 40' OR AS NOTED	1 of 6
APPROVED BY: DG		